



Explore the new menu of TESEO

# CORN & SOYBEAN

Current Market Trends  
and Forecast



Release Date 22 February 2019 - Next Release: March 2019

# CORN - Global and US outlook

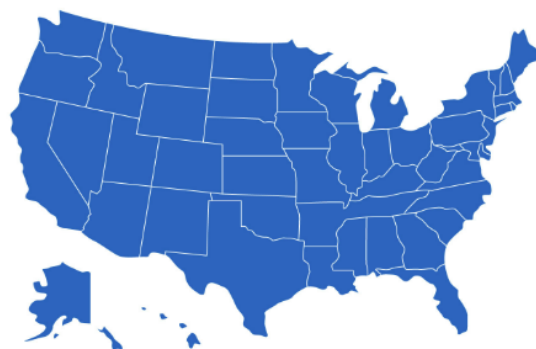
This slideshow is under CLAL.it website's **Legal notes and privacy**


Forecast season Sep 2018 - Aug 2019



World Data (2018-19)	Million Tons	From December outlook
Beginning Stocks	340.81	+0.2%
Production	1,099.61	0.0%
Domestic Consumption	1,130.64	-0.1%
Ending Stocks	309.78	+0.3%

Source (data and forecast): USDA - FAS Foreign Agricultural Service (WASDE report February 2019) - processed by: CLAL.

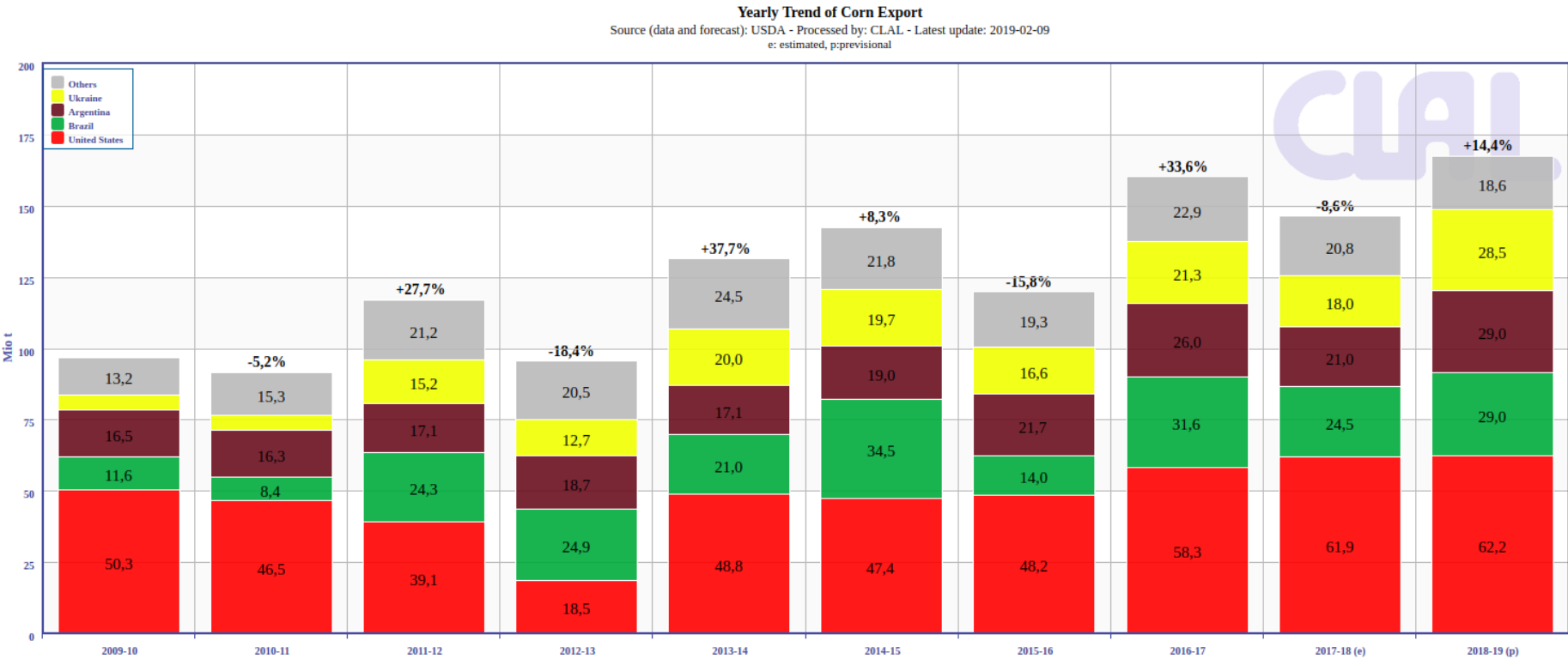


 U.S. Data (2018-19)	Million Tons	Billion Bushels	From December outlook
Beginning Stocks	54.37	2.14	0.0%
Production	366.29	14.42	-1.4%
Domestic Consumption	315.36	12.42	-1.3%
Exports	62.23	2.45	0.0%
Ending Stocks	44.08	1.74	-2.6%

Source (data and forecast): USDA - FAS Foreign Agricultural Service (WASDE report February 2019) - processed by: CLAL. CORN conversion factors: 1 bushel = 0.027 metric ton - 1 metric ton = 39.38 bushel.

**TESEO**

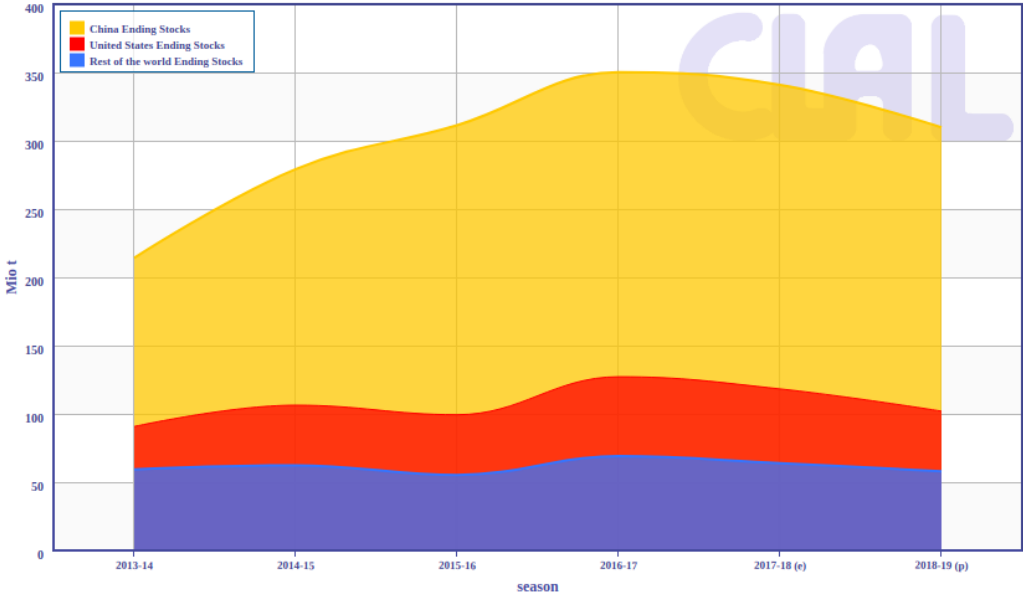
# WORLD | Corn Top Exporters - Yearly trend



# Corn Ending stocks (China and U.S.)

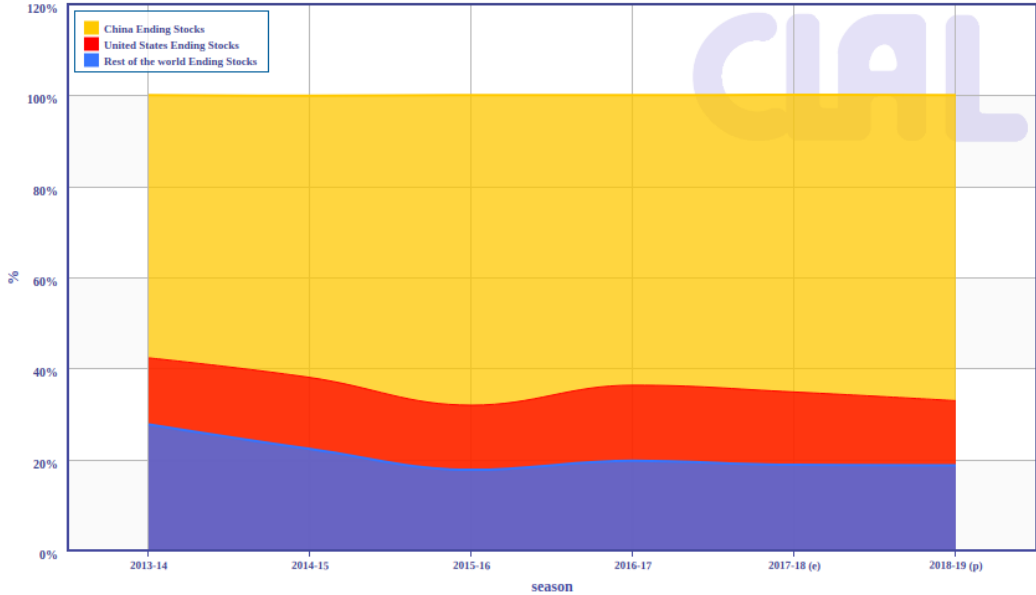
## Quantity

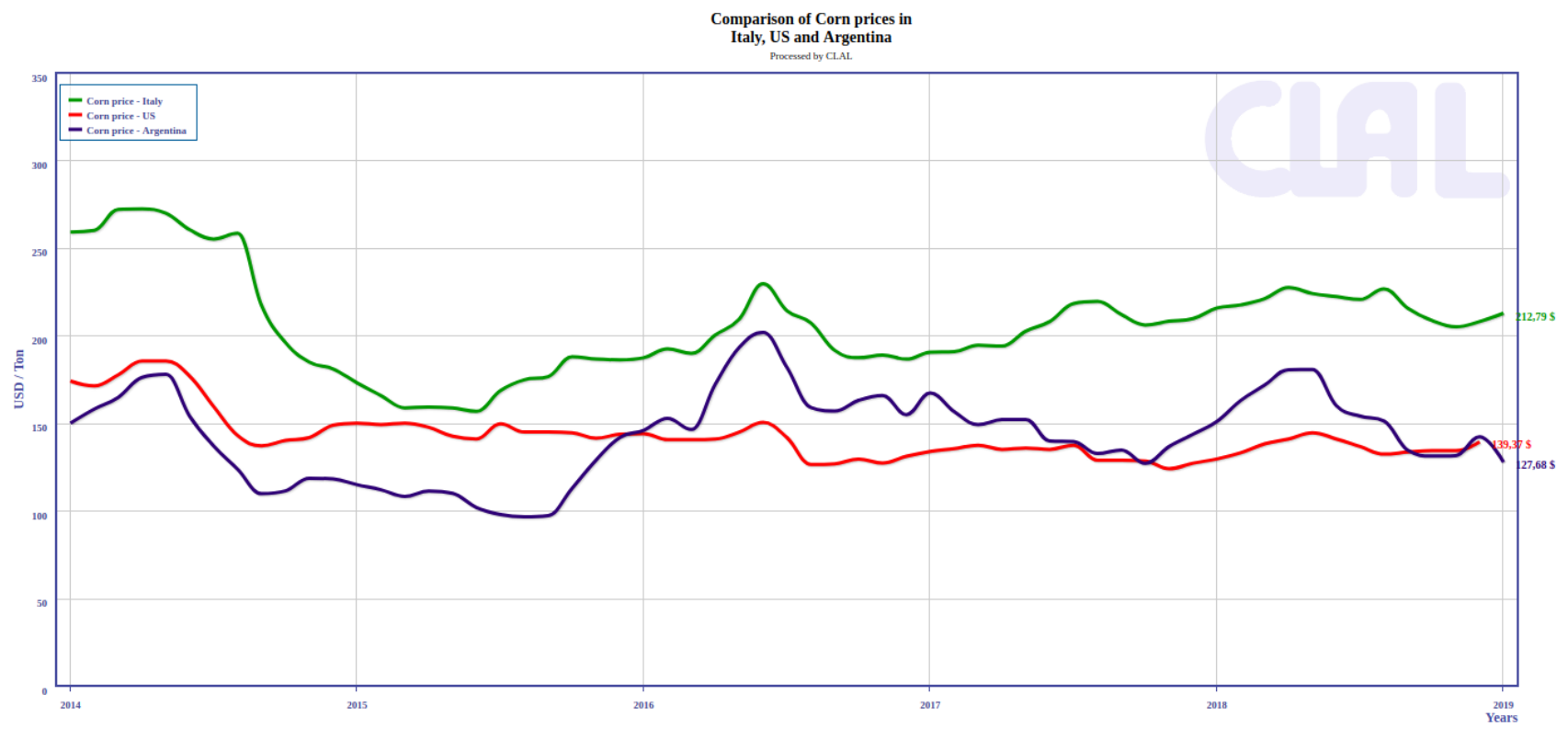
**World - Corn Ending Stocks**  
Source (data and forecast): USDA - Processed by: CLAL  
Latest update: 2019-02-09 - e: estimated, p:previsional



## % on total

**World - Corn Ending Stocks (% on total)**  
Source (data and forecast): USDA - Processed by: CLAL  
Latest update: 2019-02-09 - e: estimated, p: provisional





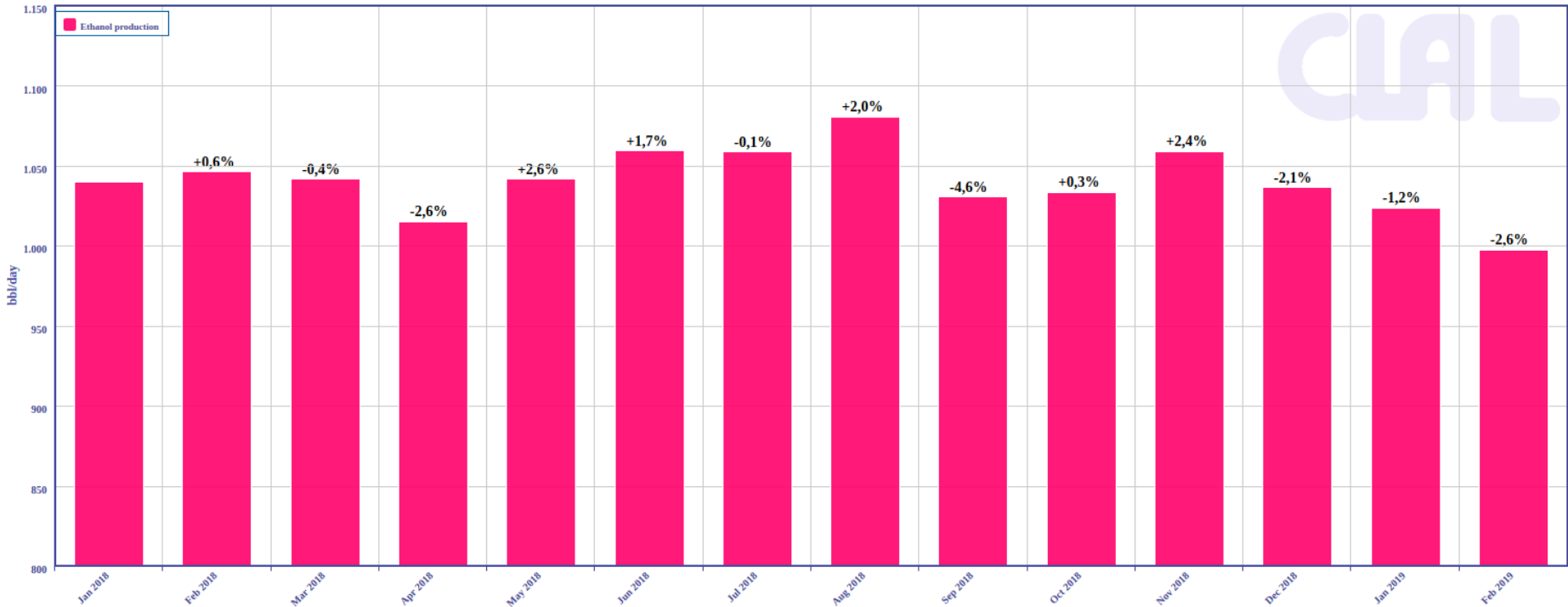
Visit the page about [Corn](#) prices in the USA, Argentina and Italy.



# U.S. ethanol production

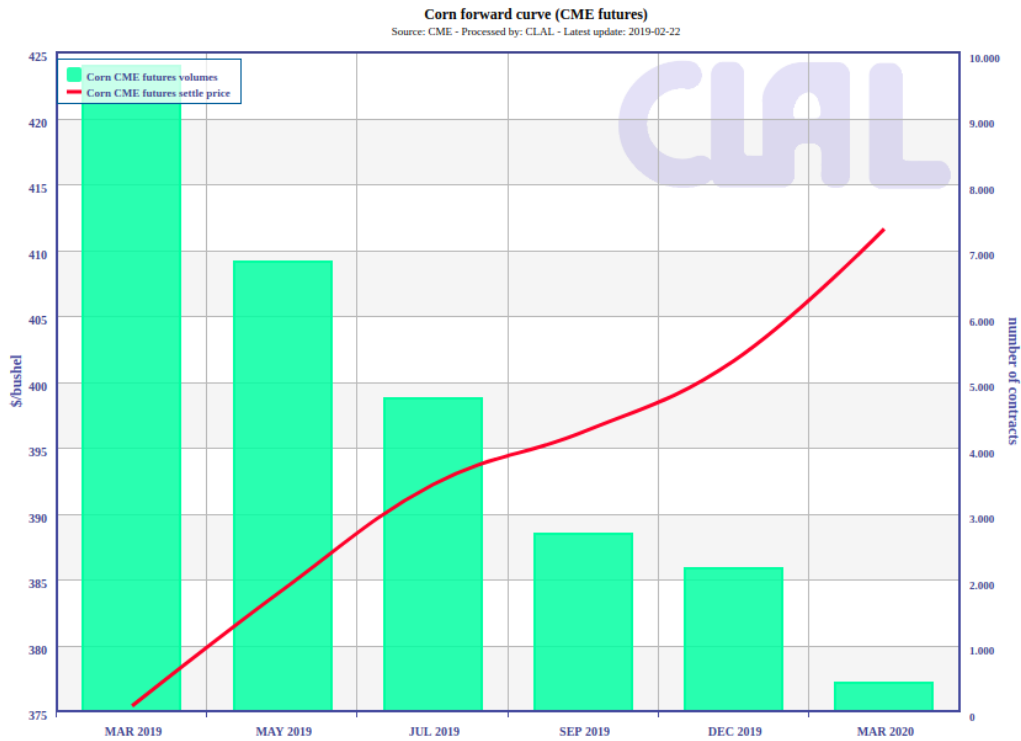
This slideshow is under CLAL.it website's **Legal notes and privacy**

U.S.: Monthly Trend of ethanol production  
Source: US Energy Information Administration  
Latest Update: 2019-02-15



TESEO

# Corn forward curve (CME futures)



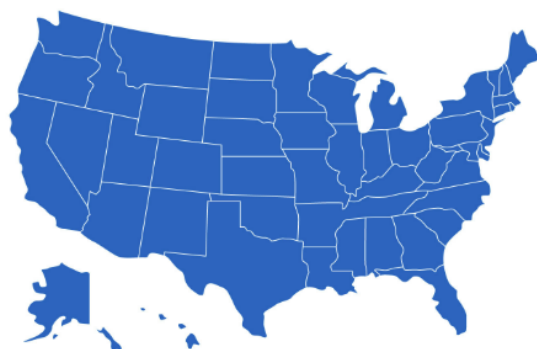
# SOYBEAN - Global and U.S. outlook


Forecast season Oct 2018 - Sep 2019



World Data (2018-19)	Million Tons	From December outlook
<b>Beginning Stocks</b>	98.09	-3.2%
<b>Production</b>	360.99	-2.2%
<b>Domestic Consumption</b>	349.44	-0.6%
<b>Ending Stocks</b>	106.72	-7.5%

Source: USDA - FAS Foreign Agricultural Service (WASDE report February 2019) - processed by: CLAL.



 U.S. Data (2018-19)	Million Tons	Billion Bushels	From December
<b>Beginning Stocks</b>	11.92	0.44	0.0%
<b>Production</b>	123.66	4.54	-1.2%
<b>Domestic Consumption</b>	60.34	2.22	+0.4%
<b>Exports</b>	51.03	1.87	-1.3%
<b>Ending Stocks</b>	24.76	0.91	-4.7%

Source: USDA - FAS Foreign Agricultural Service (WASDE report February 2019), processed by CLAL.  
SOYBEANS conversion factors: 1 bushel = 0.027 metric ton - 1 metric ton = 36.74 bushel.

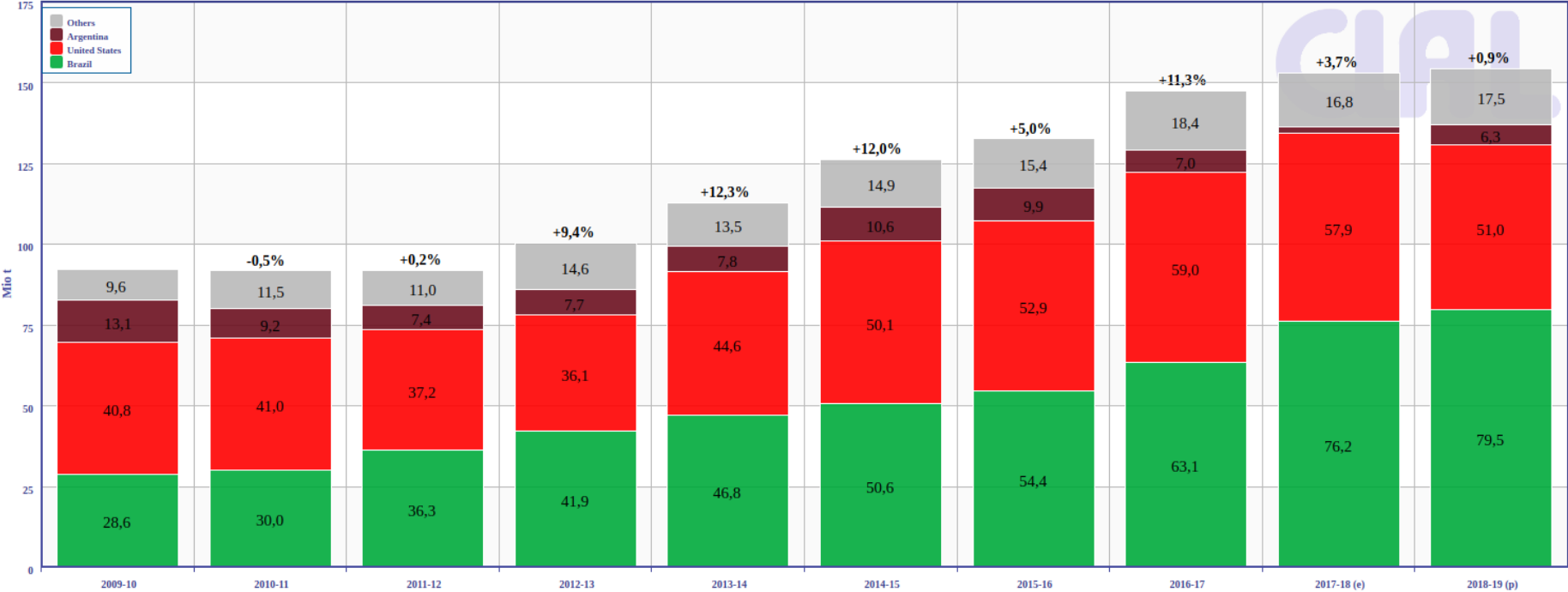
**TESEO**



# WORLD | Soybean Top Exporters - Yearly trend

Yearly Trend of Soybean Export

Source (data and forecast): USDA - Processed by: CLAL - Latest update: 2019-02-09  
e: estimated, p:provisional

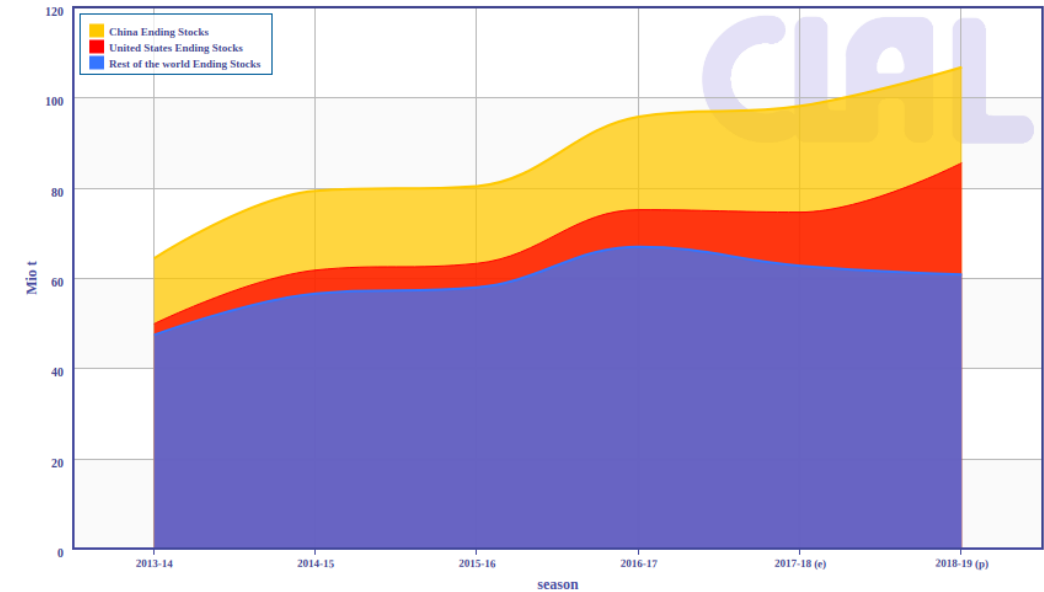


# Soybean Ending stocks (China and U.S.)

## Quantity

World - Soybean Ending Stocks

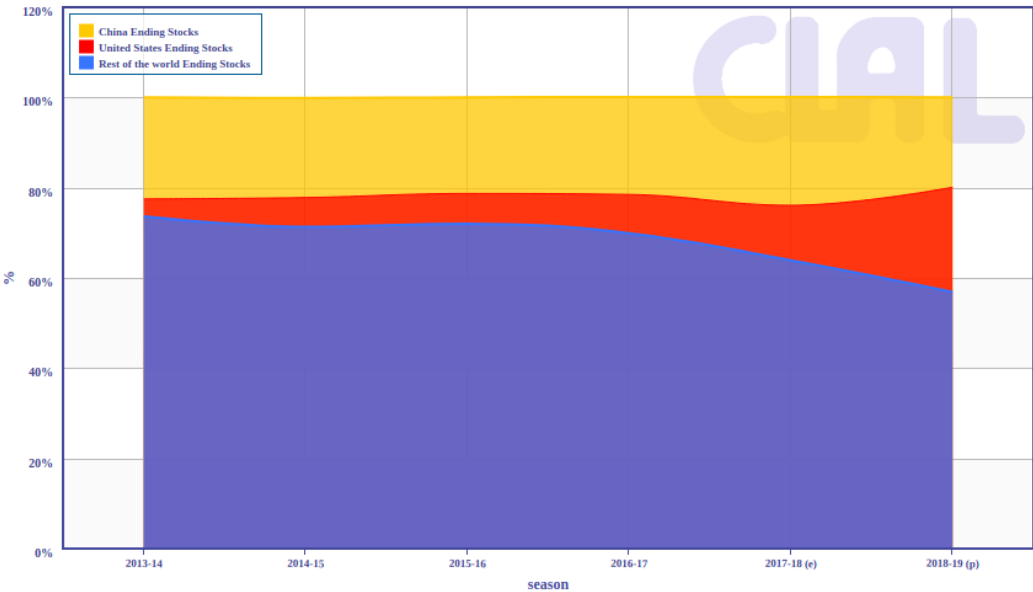
Source (data and forecast): USDA - Processed by: CLAL  
Latest update: 2019-02-09 - e: estimated, p: provisional

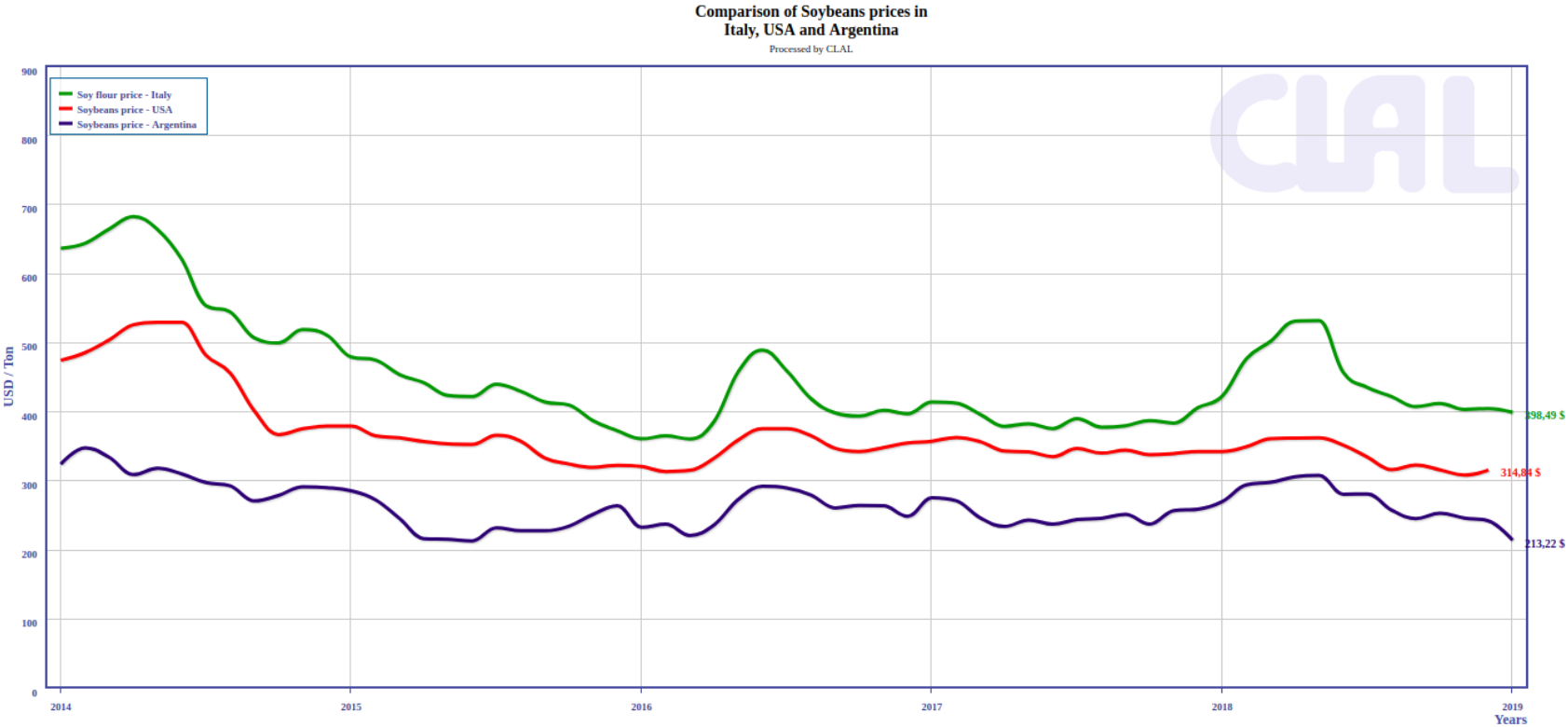


## % on total

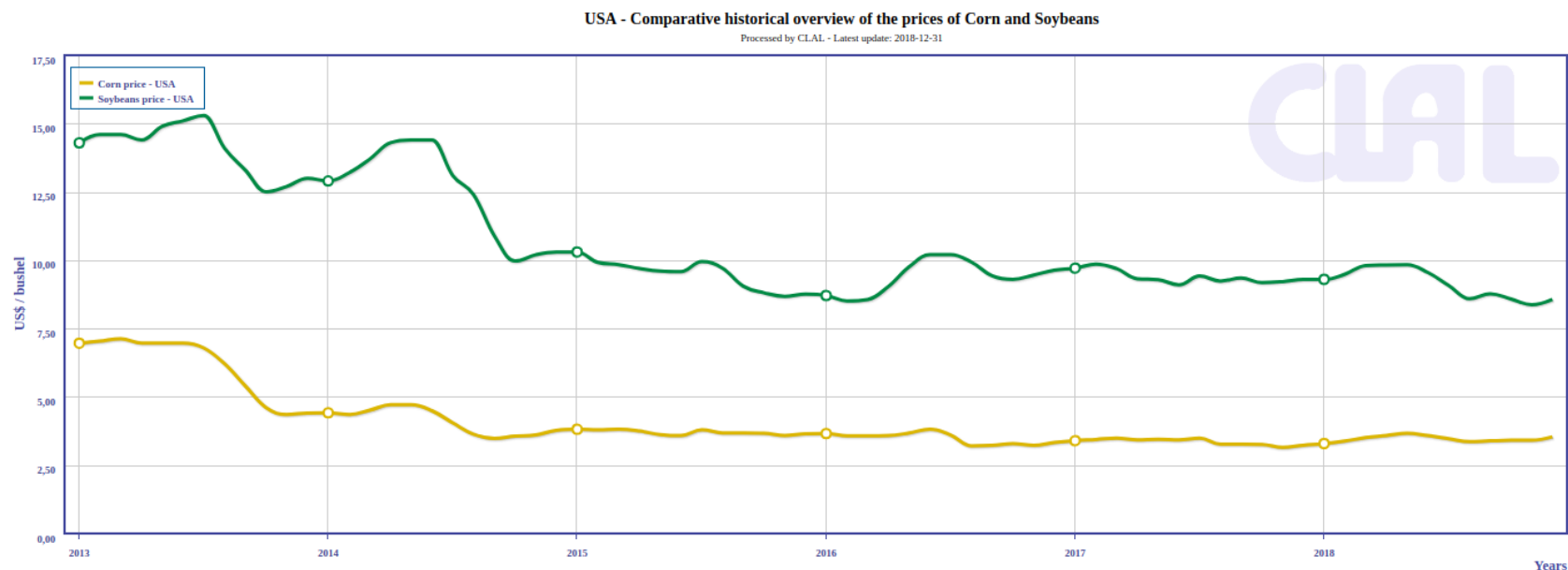
World - Soybean Ending Stocks (% on total)

Source (data and forecast): USDA - Processed by: CLAL  
Latest update: 2019-02-09 - e: estimated, p: provisional





Visit the page about [soybean](#) prices in the USA, Argentina and Italy.



USDA projected season-average price				
Product	Month	\$/bushel	\$/ton	€/ton
Corn	Feb 2019	3.36\$	132\$	117€
Corn	Dec 2018	3.36\$	132\$	116€
Soybean	Feb 2019	8.60\$	316\$	279€
Soybean	Dec 2018	8.60\$	316\$	276€