

Corn & Soybeans

- ▶ **Corn** (source WASDE)
 - ▶ Estimate for the 2015-16 Season
 - ▶ Global and US outlook
 - ▶ Production, utilization and stocks
- ▶ **Soybean** (source WASDE)
 - ▶ Estimate for the 2015-16 Season
 - ▶ Global and US outlook
 - ▶ Production, utilization and stocks
- ▶ **Corn and Soybeans prices** (Source CME)
- ▶ **Price connections** (CIAl's processing)
- ▶ **Focus on Italy** (Milan Chamber of Commerce)



CORN

Estimate for 2015-16 Season

- ▶ **Global corn production** for 2015-16 is lowered 1 Mio t from last month at **973.87 Mio t**, with reductions for India and South Africa.
- ▶ Corn production is lowered 1.5 Mio t for **India** with reduced area and yield prospects as a result of limited monsoon rainfall. **South Africa** corn production is lowered 0.8 Mio t as October and November dryness has significantly delayed plantings in the higher-yielding eastern growing areas, thus reducing yield prospects.
- ▶ Partly offsetting these reductions is a 1.3 Mio t increase for **Canada** corn (13.60 Mio t).

- ▶ **U.S.** corn production is unchanged from November estimates. Corn **exports** are projected 1.27 Mio t lower at **44.45 Mio t**, reflecting the slow pace of sales and shipments to date and **higher projected exports for Brazil and Canada**.
- ▶ U.S. corn use for **ethanol production** in 2015-16 is projected higher.

- ▶ **World corn trade** for 2015-16 is lowered with imports reduced for Canada and Taiwan. Corn exports are lowered for the United States, India, and South Africa, but raised for Canada.



CORN – **Global** and **US** outlook: Estimate for the 2015-16 Season



	Million tons	From November 2015 (projections)
Beginning stocks	208.19	0.0%
Production	973.87	-0.1%
Total use	970.20	-0.1%
Ending stocks	211.85	0.0%



	Billion bushels	Million tons	From November 2015 (projections)
Beginning stocks	1.73	43.98	0.0%
Production	13.66	346.82	0.0%
Total use	11.86	301.77	+0.2%
Export	1.75	44.45	-2.8%
Ending stocks	1.79	45.34	+1.4%
Price projection	3,65 \$/bushel	144 \$/ton	131 €/ton ↓
1 month ago	3,65 \$/bushel	144 \$/ton	134 €/ton

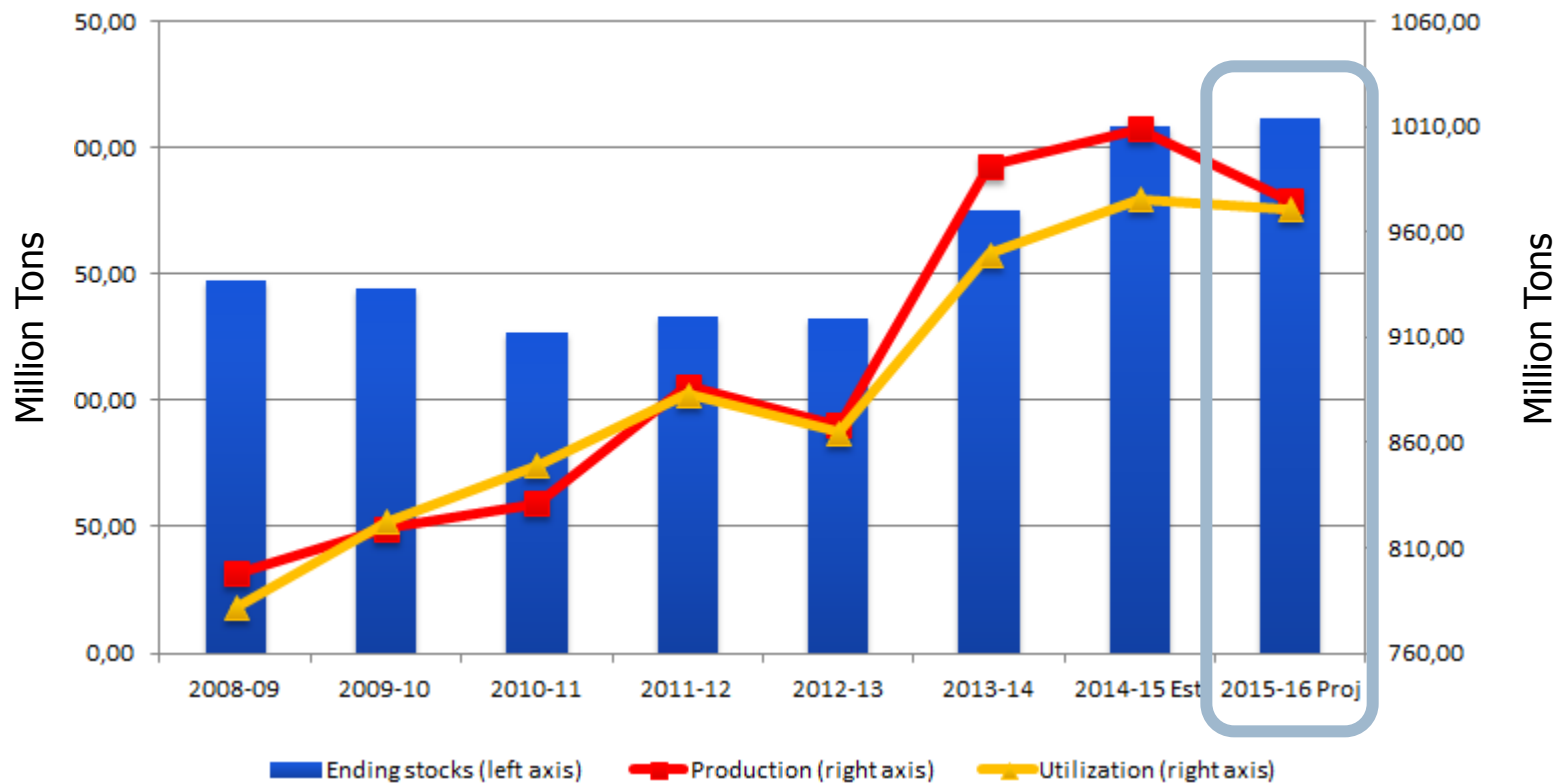
CORN conversion factors
1 bushel = 0.025 metric ton
1 metric ton = 39.38 bushel



CORN – **Global** outlook: production, utilization and stocks

World – Corn Production, Utilization and Stocks

Processed by CLAL on WASDE data





SOYBEANS

Estimate for 2015-16 Season

- ▶ **Global soybean production** for 2015-16 is projected at **320.11 Mio t**, - 0.91 Mio t from the November forecast.
- ▶ The **India** soybean crop is reduced 1.5 Mio t to 8 Mio t on lower yields resulting from inconsistent rainfall during the growing season and late-season heat. Larger projections for Canada, Russia and Ukraine partly offset the reduction for India.
- ▶ U.S. soybean supply projections for 2015-16 are unchanged from last month, with record production at 108.35 Mio t and with ending stocks at 12.65 Mio t, which, if realized, would be the highest since 2006-07.
- ▶ **Global soybean trade** is projected higher, with higher export projections for Argentina, Serbia and Ukraine, and higher import projections for Pakistan, Taiwan and Iran.



SOYBEANS – **Global** and **US** outlook: Estimate for the 2015-16 Season



	Million tons	From November 2015 (projections)
Beginning stocks	77.66	+0.1%
Production	320.11	-0.3%
Total use	312.32	0.0%
Ending stocks	82.58	-0.3%



	Billion bushels	Million tons	From November 2015 (projections)
Beginning stocks	0.19	5.21	0.0%
Production	3.98	108.35	0.0%
Total use	2.02	55.06	0.0%
Export	1.72	46.68	0.0%
Ending stocks	0.46	12.65	0.0%
Price projection	8.90 \$/bushel	327 \$/ton	298 €/ton ↓
1 month ago	8.90 \$/bushel	327 \$/ton	304 €/ton

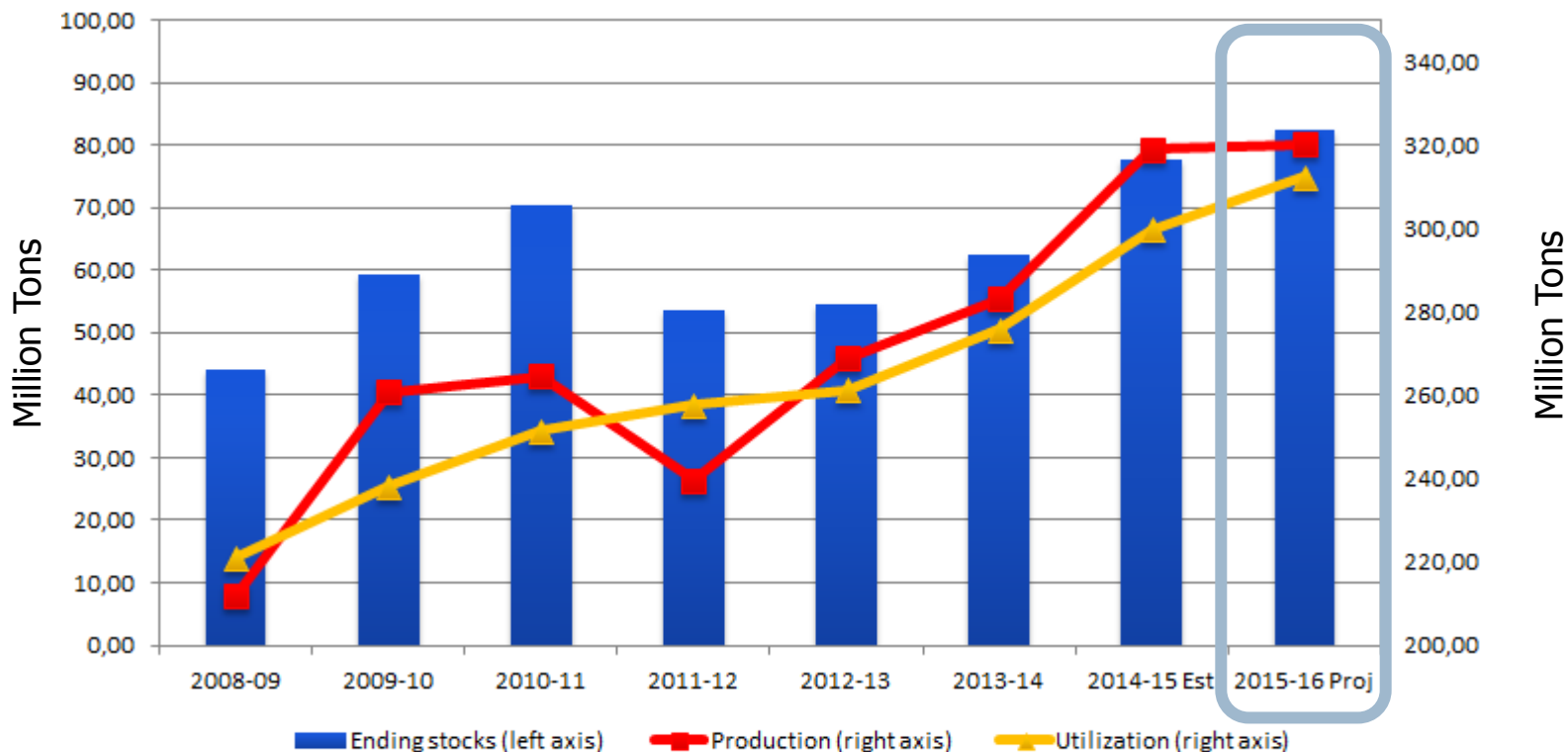
SOYBEANS conversion factors
1 bushel = 0.027 metric ton
1 metric ton = 36.74 bushel



SOYBEANS - **Global** outlook: production, utilization and stocks

World – Soybeans Production, Utilization and Stocks

Processed by CLAL on WASDE data



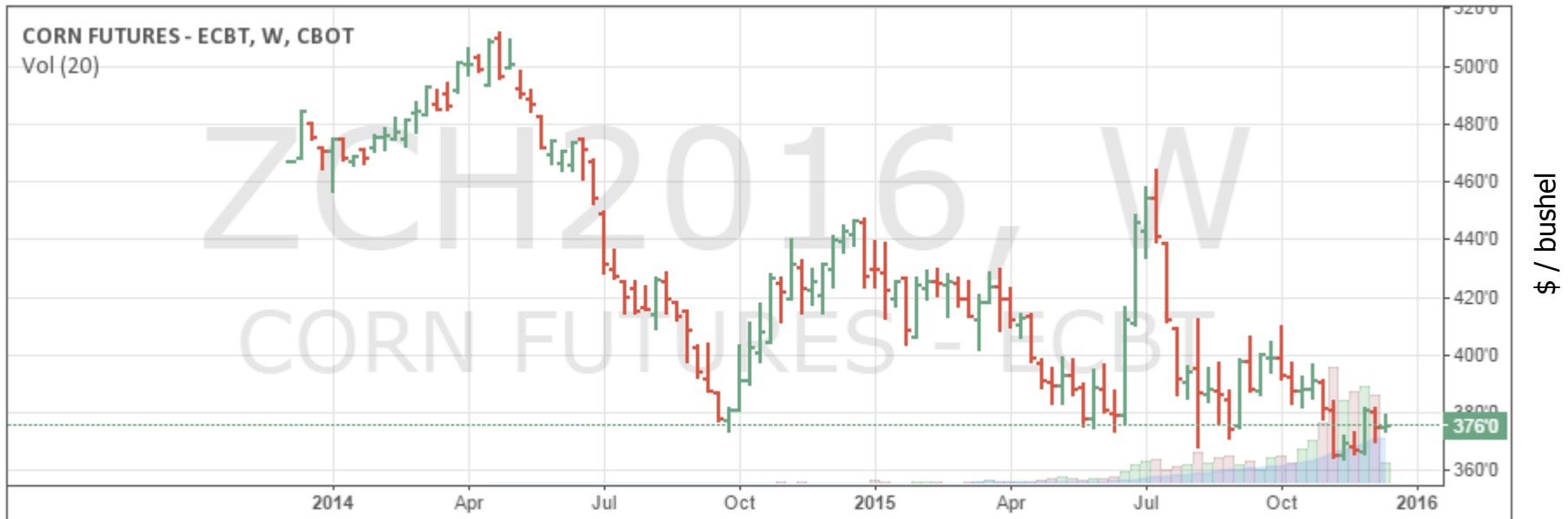


Chicago Mercantile Exchange (CME)

Corn prices

- ▶ Corn price trend as listed by the [CME of Chicago](#):

CBOT:ZCH2016, W 376'0 ▼-3'0 (-0.79%) O:375'0 H:379'6 L:374'2 C:376'0



 **CME Group**
Powered by TradingView.com



Chicago Mercantile Exchange (CME) Soybean prices

- ▶ Soybean price trend as listed by the [CME of Chicago](#):

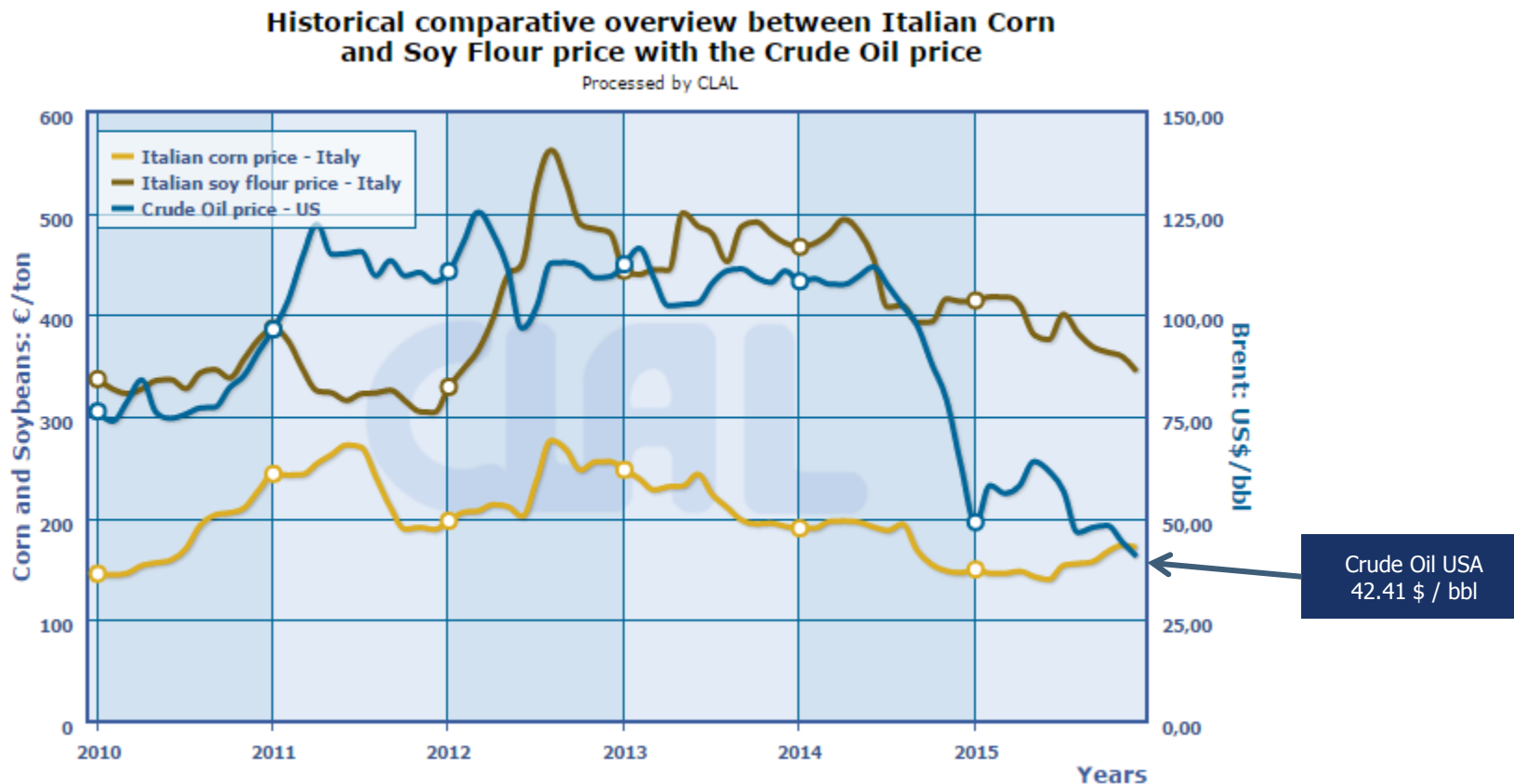
CBOT:ZSF2016, W 869'2 ▼-4'2 (-0.49%) O:870'6 H:877'6 L:866'4 C:869'2



 **CME Group**
Powered by TradingView.com

Agricultural and Energy Inputs Correlations

- ▶ Price comparison: Corn (Italy), Soy flour (Italy) and Crude Oil (US)



Focus on **Italy**

Corn and Soy prices

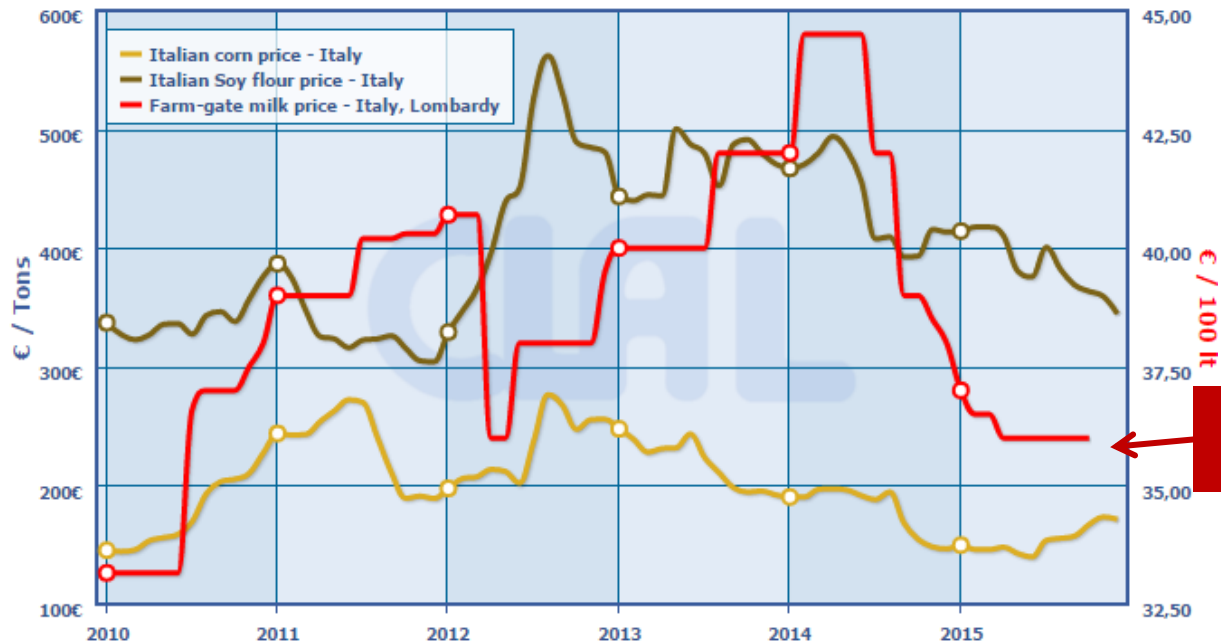
▶ National Corn and Soy prices as listed by the Milan Chamber of Commerce, in comparison with the Farm-gate milk price:

- ▶ Italian Corn: 170 ÷ 172 €/ton (-3 € from last month)
- ▶ Italian Soy flour: 334 ÷ 335 €/ton (-29 € from last month)



Historical comparative overview between Italian Corn and Soy Flour price with the Farm-gate Milk price

Processed by CLAL



Farm-gate milk
Italy (Lombardy)
October 36 € / 100 Lt